

Passenger Capacity of different Transport Modes

Passengers per hour
on 3.5m wide lanes in the city

 = 1,000 average passengers / hour

 = 1,000 potential passengers / hour

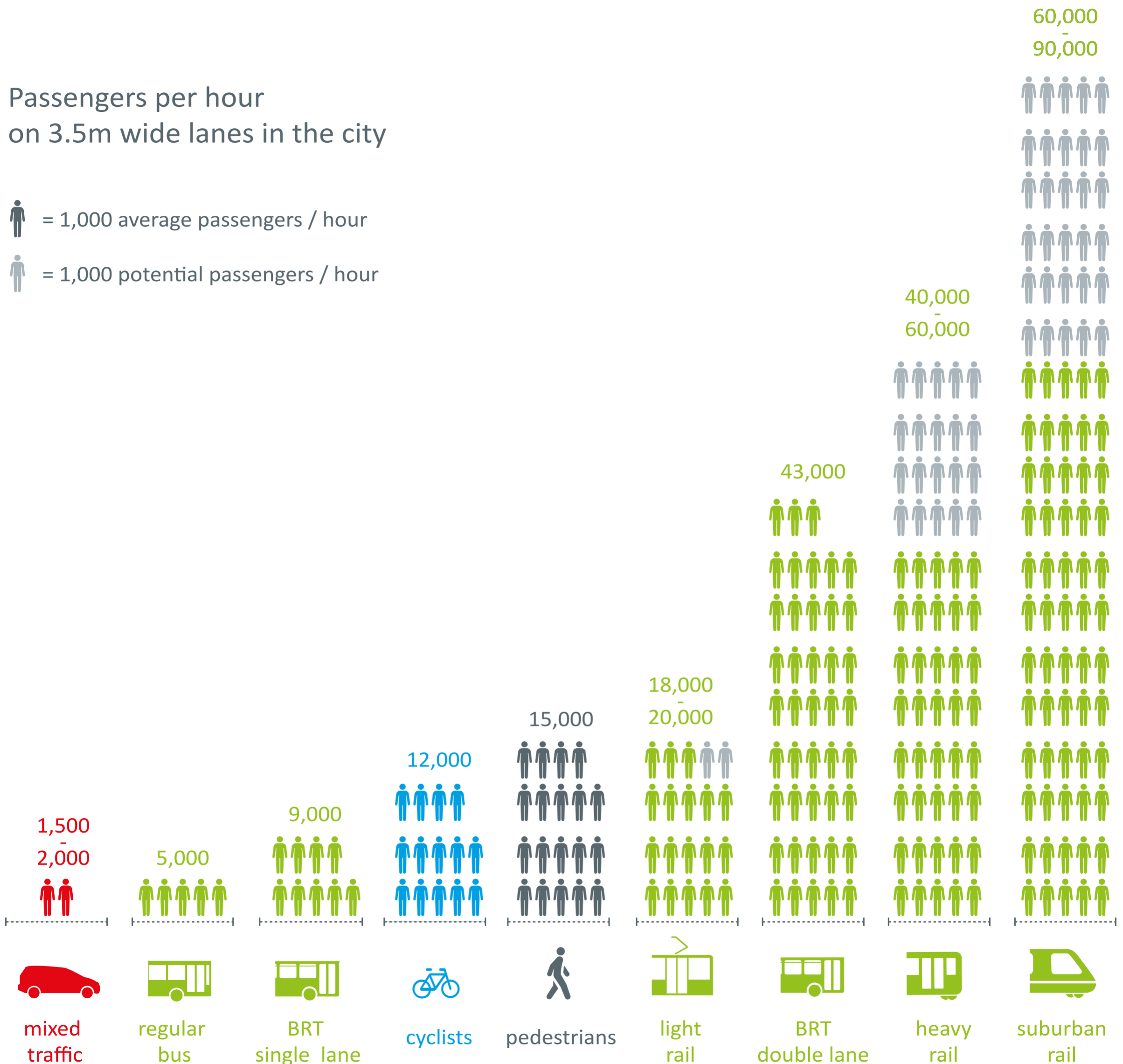


Illustration based on: Breithaupt based on Botma & Papendrecht (1991). Traffic operation of bicycle traffic, TU Delft. <http://www.uncrd.or.jp/content/documents/5594Presentation%203%20-%20Module%201%20-%20Mr.%20Breithaupt.pdf> (accessed 20.09.2018)